

JOB _____ ITEM # _____ QTY # _____

MODEL NUMBER:

- ☐ 7QT-D-T-R
- ☐ 7QT-OD-T-R
- ☐ 11QT-D-T-R
- ☐ 11QT-OD-T-R

WARRANTY

- One year parts and labor. Warranty is detailed on inside front cover of the price list.

SHIPPING INFORMATION

- Shipping Weight:9
- Shipping Cubic Feet:1.2
- Freight Class:92.5



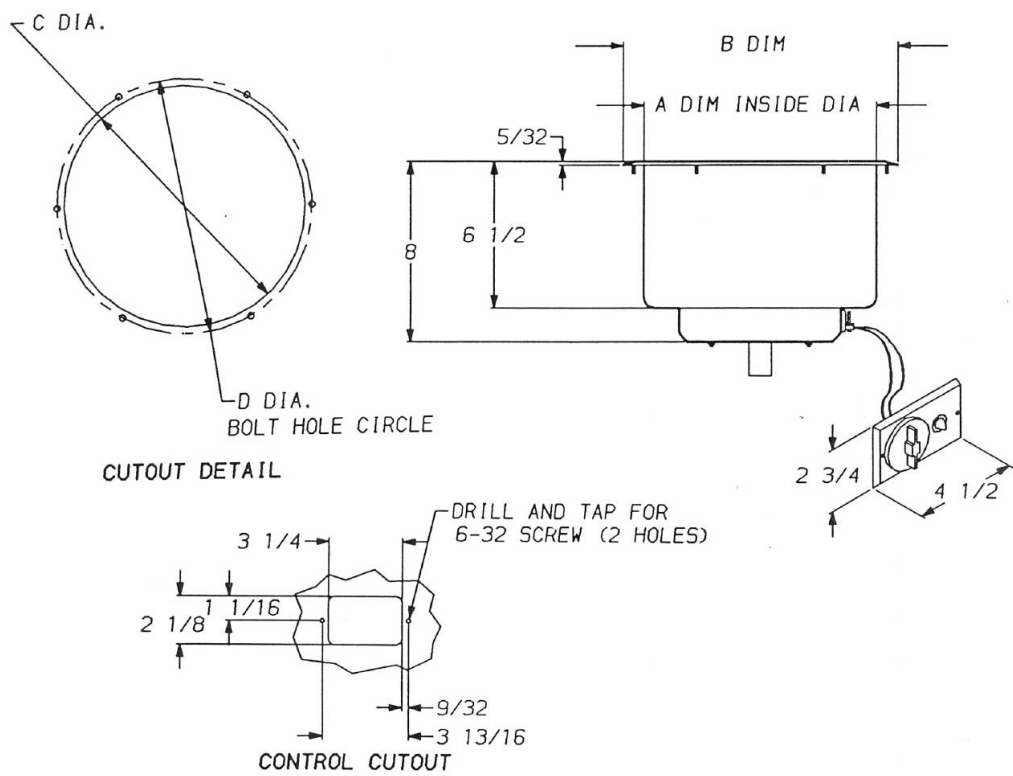
7QT-D-T-R

Heavy-duty electric Round food storage receptacles are designed for drop-in (top mounting) installation into a custom counter fixture. Designed for wet or dry usage, these units may be installed in metal or wood countertops.*

STANDARD FEATURES

- Top mounting flange and food well is constructed of one piece, deep drawn, stainless steel
- Furnished with a circular strip heater rated at .3KW for energy efficiency
- Controlled by an infinite heat switch
- Easy to read ON/OFF indicator light
- Adjustable temperature controls
- Lead wires are 48" long for easy installation
- Units with drain have a 3/4" drain pipe with screen as standard

SPEC D-4



Model#	A	B	C	D	Amperage 120V	Amperage 208V	Amperage 240V	Wattage	Ship Wt. (lbs)
7QT-D-T-R	8-3/8" diameter	10-7/32"	8-3/16" diameter	9-7/16"	2.5	1.4	1.3	300	9
7QT-OD-T-R	8-3/8" diameter	10-7/32"	8-3/16" diameter	9-7/16"	2.5	1.4	1.3	300	9
11QT-D-T-R	10-3/8" diameter	12-9/32"	10-11/16" diameter	11-5/16"	2.5	1.4	1.3	300	10
11QT-OD-T-R	10-3/8" diameter	12-9/32"	10-11/16" diameter	11-5/16"	2.5	1.4	1.3	300	10

SPEC D-4