

JOB _____ ITEM # _____ QTY # _____

MODEL NUMBER:

- ☐ 2-FTDI
- ☐ 3-FTDI
- ☐ 4-FTDI
- ☐ 5-FTDI
- ☐ 6-FTDI

DIMENSIONS:

- 2-FTDI - H x 25.75"W X D
- 3-FTDI - H x 25.75"W X D
- 4-FTDI - H x 25.75"W X D
- 5-FTDI - H x 25.75"W X D
- 6-FTDI - H x 25.75"W X D

Electrical

- 120 volts single-phase, 6.3 amps
- On/Off switch and pilot light are supplied in a remote mounted control box which is factory connected to the main control box via flexible conduit.

Refrigeration System

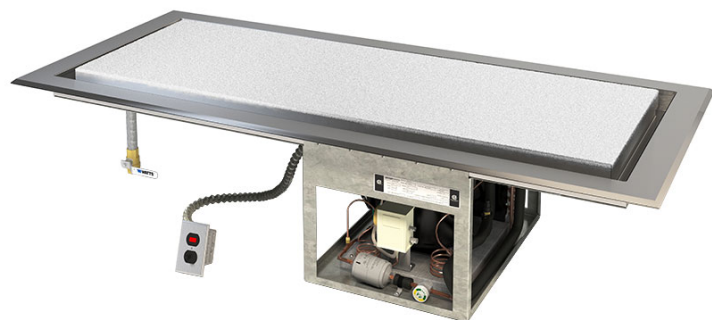
- 1/3 horsepower fan cooled condensing unit with an expansion valve and fin and tube evaporator coil.
- Environmentally safe 134A refrigerant
- Copper tubing refrigerant coils attached to the bottom of the cold plate and fully insulated.

Warranty

- One year parts and labor. Warranty is detailed on inside front cover of the price list.

SHIPPING INFORMATION

- Shipping Weight: 230
- Shipping Cubic Feet:
- Freight Class: 92.5



4-FTDI

Pipers innovative "Frost Top Units" are ideal for parfaits, pastries, gelatins and a variety of other dessert and salad dishes. These units combine excellent display and appeal with easy, efficient cooling.

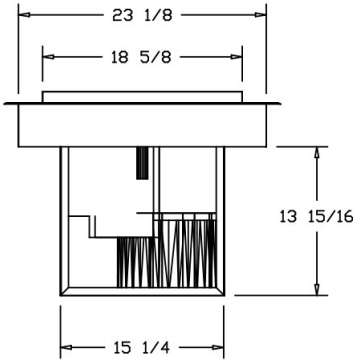
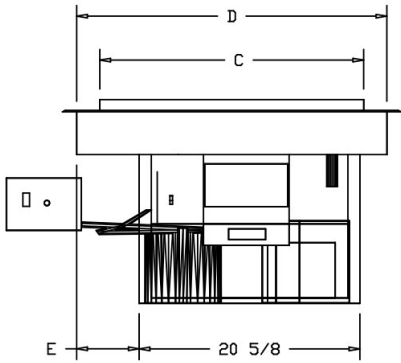
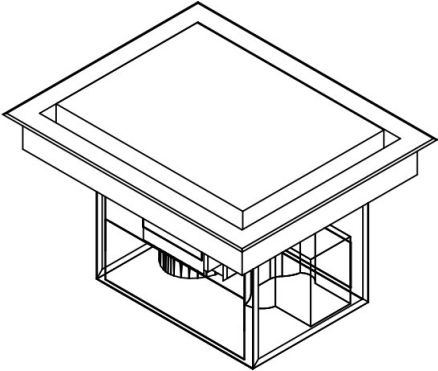
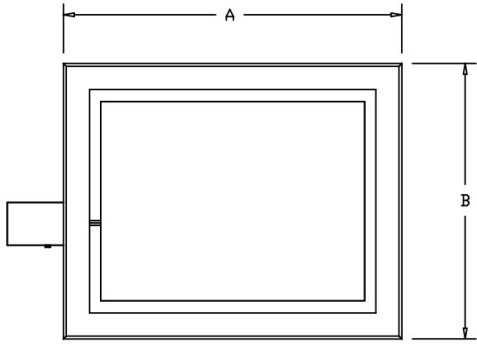
Standard Features

- 14-gauge stainless steel top with a feathered down edge on all sides
- Top has raised one-piece 14-gauge cold plate with drip trough on all sides, 1/2" drain and valve on one end of trough.
- A 3/4" drain is built into the bottom of the well to the right from the operator's side
- Uses environmentally friendly 134A refrigerant

SPEC D-8B

D | DROP-INS

Frost Top Drop-Ins



Model#	A	B	C	D	E
2-FTDI	31.625"	25.75"	24.625	24.625	5.875
3-FTDI	45.625"	25.75"	38.625	43	9.5
4-FTDI	59.625"	25.75"	52.625	57	9.5
5-FTDI	73.625"	25.75"	66.625	71	9.5
6-FTDI	87.625"	25.75"	80.625	85	9.5

SPEC D-8B