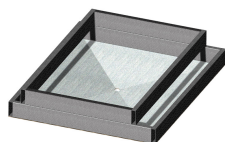




RP-16



PIPER'S SUPERIOR FOUNDATION

Fully welded coated steel frame with 18 gauge base plate

Maximize proofing capacity while saving valuable floor space with the RP-16. This self-contained proofer provides efficient, consistent proofing. Our dependable controls and standard automatic humidity take the worry and hassle out of the proofing process.

STANDARD FEATURES

- Individual heat and humidity controls provides precise control over proofing environment
- Individual heat controls go from 0° to 125° (optional 225°)
- High volume blowers Circulates heat and humidity efficiently
- Standard automatic humidity Eliminates manual fill water pan
- Full-view glass door provides sight-proofing
- Heavy-duty cabinet construction and stainless steel finish - interior and exterior - provides long life and easy maintenance

JOB _____ ITEM # _____ QTY # _____

MODEL NUMBER:

- ☐ RP-16

DIMENSIONS:

- RP-16 - 70"H x 33"W X 40" (includes handle)D

CONSTRUCTION

The proofer's interior and exterior shall be constructed of 20 gauge stainless steel. Corner posts constructed of 18 gauge stainless steel. The proofer shall have two thermostatically controlled 750 watt elements for creating heat and an infinitely controlled humidistat 1250 watt burner element for creating moisture. Proofer shall be brightly lit providing sight merchandising.

Proofer shall have two individual circuit breakers. One for the proofer thermostat and heat element. One for the humidity infinite switch and burner element and the proofer lights.

WARMER OPTION (RP-16-W)

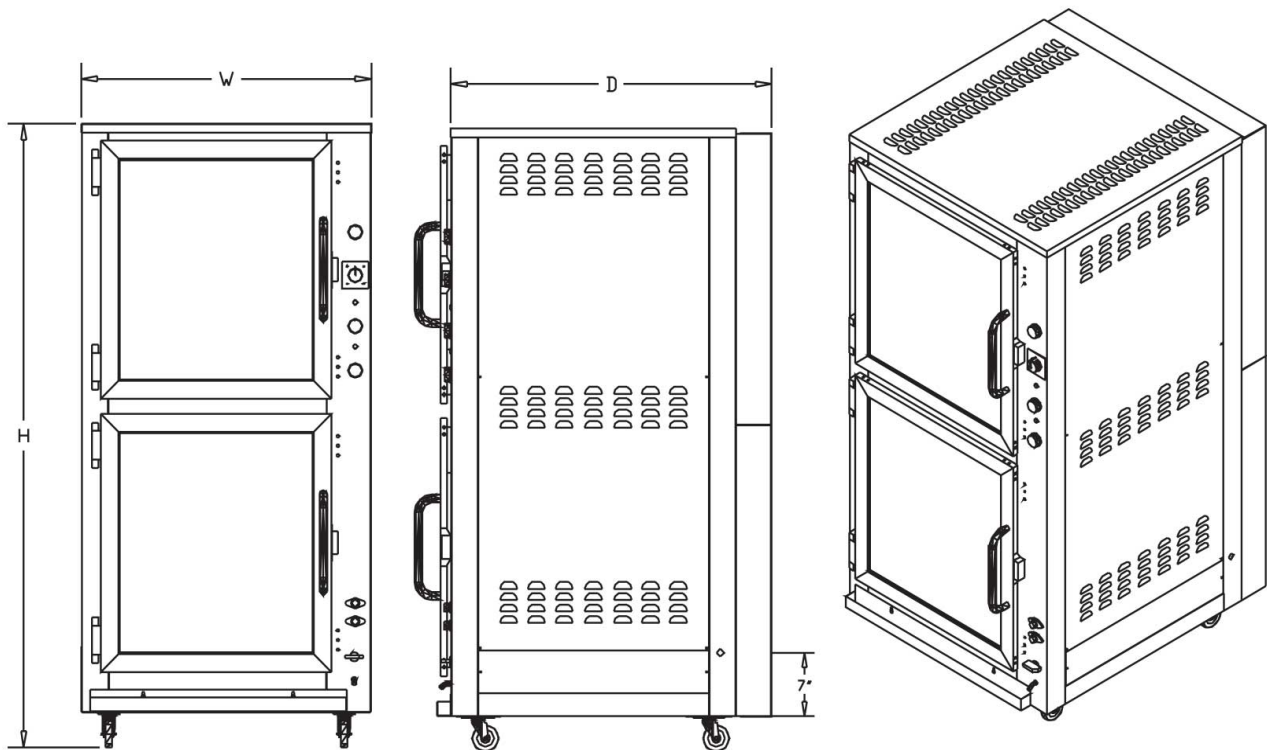
- Fully insulated
- Holds maximum temperature of 225°
- Maintains back-up product for display
- Separate humidity control keeps product at ideal moisture level for peak flavor

COMMON OPTIONS

- Manual-fill water pan is available

WARRANTY

- One year parts and labor. Warranty is detailed on inside front cover of the price list.



Interior Dimensions: 57"H x 24-1/2"W x 30"D Racks are adjustable every 3 inches.
Please specify doors hinged left or right. Hinged left is standard.

ELECTRICAL

VOLTS	PHASE	WIRE**	AMPS	WATTS	HERTZ
120	1	2	19	2253.5	60
120/208	1	3	13	2253.5	60
120/208	3	4	n/a	2253.5	60
120/240	1	3	11	2253.5	60
120/240	3	4	n/a	2250.5	60

Unit is also available in 120/208 and 120/240. Consult factory for details.

*Units are shipped without cord and plug. Designed to be hard wired. Installation requires a 4" clearance around the entire unit and should be made by a licensed electrician. Check local codes for vent hood requirements.

** Number of wires does not include ground.

Note: Automatic humidity feature, standard with the proofer section, requires 1/8" FPT water line to be supplied. Product failure caused by liming or sediment buildup is not covered under warranty.

COMMON OPTIONS

☐ Manual Fill Water pan

☐ W Warmer*

CAPACITY

PROOFER ACCOMMODATES:

- 16 nylon-coated wire racks (12 furnished with unit), 16, Standard 18" x 26" Sheet Pans, 16, Donut Screens, 16, 4-strapped 1lb Bread Pans, 8, 4-strapped 1.5lb Bread Pans, additional racks are available

SHIPPING INFORMATION

- Shipping Weight:500
- Shipping Cubic Feet:51.91
- Freight Class:100